



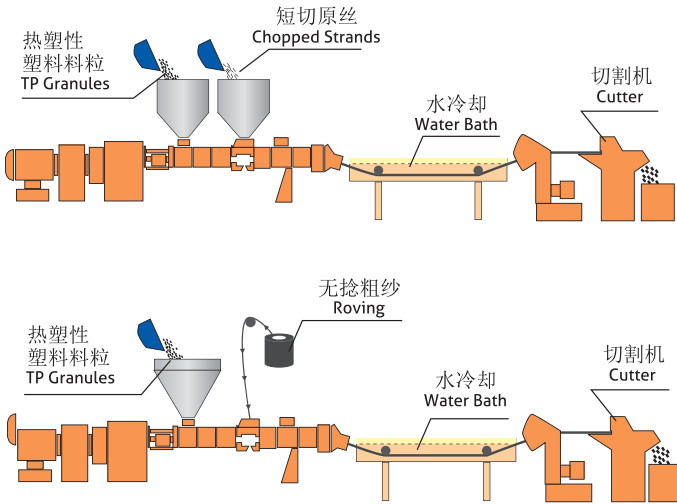
热塑性塑料用玻璃纤维产品

FIBERGLASS PRODUCTS FOR **THERMOPLASTICS**



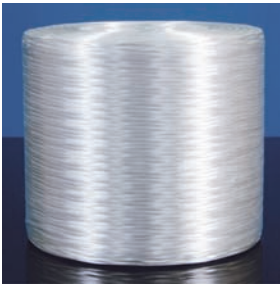
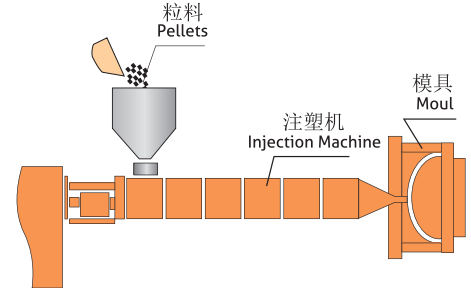
挤出与注塑工艺

将玻璃纤维无捻粗纱或短切原丝与热塑性树脂通过挤出机混合挤出并切粒制得粒料，然后将这些粒料加入到注塑机经过注塑成型制得最终制品。



Extrusion and Injection Processes

The reinforcements (glass fiber roving or chopped strands) and thermoplastic resin are mixed in an extruder. After cooling, they are chopped into reinforced thermoplastic pellets. The pellets are fed into an injection molding machine to form finished parts.



热塑性塑料用无碱玻璃纤维无捻粗纱

热塑性塑料用无碱玻璃纤维无捻粗纱是一种理想的增强材料，涂覆硅烷基浸润剂，可用于增强PA、PBT、PET、PP、ABS、AS、PC等树脂。具有良好的加工性能和分散性，可赋予复合材料优异的物理机械性能。

Roving for Thermoplastics

Coated with silane-based agents, our glass rovings for thermoplastics are ideal options for reinforcing many resin systems such as PA, PBT, PET, PP, ABS, AS and PC. The rovings have excellent processability and dispersion, imparting outstanding physical and mechanical properties to the composite products.

产品牌号 Product Code	牌号详情 Details	纤维直径 Filament Diameter (μm)	典型线密度 Nominal Linear Density (tex)	适用树脂 Resin Compatibility				产品特点 Product Features
				PA	PBT PET	AS ABS	PP	
910A		13, 14, 17	2000, 2400	★	○	○	☆	耐水解性能优异 Excellent hydrolysis resistance
960A		14, 17	2000, 2400	☆	☆	☆	★	性能高，毛羽少 High Performance, low fuzz
988A		13, 14, 17	1000, 2000 2400	☆	☆	☆	○	标准产品，FDA认证 Standard product, certified to FDA

备注：★最好 ☆好 ○一般
Notes: ★Best ☆Great ○Good



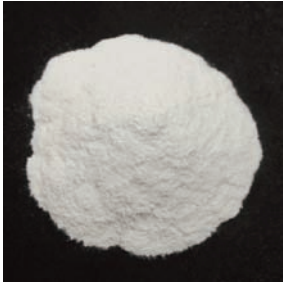
热塑性塑料用无碱玻璃纤维短切原丝

热塑性塑料用无碱玻璃纤维短切原丝采用硅烷基偶联剂、专用浸润剂配方，与PA、PBT、PET、PP、AS、ABS、PC、PPS、m-PPO、LCP等基体树脂具有良好的相容性，优良的集束性和流动性，良好的成型加工性能，可赋予复合材料优异的机械性能和表面状态。

Chopped Strand for Thermoplastics

Glass fiber chopped strand for thermoplastics uses a specifically designed sizing with silane-based coupling agent. It has good compatibility with PA, PBT, PET, PP, AS, ABS, PC, PPS, m-PPO, LCP and other matrix resins. The product has excellent strand integrity and fluidity, as well as good molding and processability, offering superior mechanical properties and surface quality to the composite parts.

产品牌号 Product Code	牌号详情 Details	适用树脂 Resin Compatibility	产品特点 Product Features
508A		PP, PE	标准产品 Standard product
508C			制品颜色白，耐水解性能优异 Excellent product color and hydrolysis resistance
508S			力学性能优异，分散性好 Excellent mechanical properties and good dispersion
510		PC	标准产品，力学性能高 Standard product, high mechanical properties
510C			耐高温性能优异 Excellent high temperature resistance
510H			高冲击性能，玻纤含量小于15 wt.% Super high impact properties, glass loading below 15 wt.%
534A		PBT, PET, ABS, AS	标准产品 Standard product
534H			耐水解性能优异 Excellent hydrolysis resistance
534T			力学性能高，耐高温性能优异，分散性好 High mechanical properties, excellent high temperature resistance, good dispersion
540H		m-PPO	标准产品，耐水解性能优异 Standard product, excellent hydrolysis resistance
560A		PA	通用产品，适用增强PA6，PA66 General product, suitable for PA6 and PA66
560K			分散性优异，优异的制品表面 Excellent dispersion, excellent product surface
568H			耐醇解性能和耐疲劳性能优异 Excellent glycol resistance and fatigue properties
568HD			耐高温性能优异，分散性好 Excellent high temperature resistance, good dispersion
584		PPS, LCP	标准产品 Standard product
584A			耐水解性能优异 Excellent hydrolysis resistance



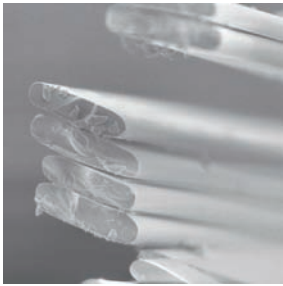
磨碎纤维

磨碎纤维采用无碱玻璃纤维生产而成，可根据客户需要生产不同规格的产品。该产品可用于增强热塑、热固以及涂料等不同类型的树脂。磨碎纤维分含处理剂和不含处理剂，用于提高复合材料力学性能、耐磨性以及表面性能。

Milled Glass Fiber

Milled Glass Fibres is made from E-glass and have different specifications to meet customer's requirement. They are used for reinforcing thermoset resins, thermoplastic resins and for painting applications. The products can be coated or non-coated to improve the composite's mechanical properties, abrasion properties and surface appearance.

产品牌号 Product Code	牌号详情 Details	适用树脂 Resin Compatibility	产品特点 Product Features
EMG13-125C		所有树脂All resins	适用所有热塑性和热固性树脂，与树脂相容性好，制品强度高，易分散 Compatible with all resins, high strength and easy dispersion
EMG13-250C			适用所有热塑性和热固性树脂，与树脂相容性好，制品表面好 Compatible with all resins, good surface appearance



扁平短切原丝

扁平短切原丝的截面呈扁平状，可满足客户低翘曲及高玻纤含量等特殊要求。该产品适用挤出注塑工艺，广泛应用于电子电器、交通运输等领域。

Flat Chopped Strands

The cross section of non-circular chopped strands is flat, which can meet customers' special requirements such as low warpage and high glass fiber content. The product is suitable for extrusion and injection molding process, and can be widely used in electric & electronics, transportation and many other fields.

产品牌号 Product Code	牌号详情 Details	适用树脂 Resin Compatibility	截面宽度 Width of cross section(μm)	扁平度 Flat Ratio	产品特点 Product Features
ECS4F-03-508A		PP, PE	6 ~ 8	4.0 ± 0.4	制品翘曲率低 Low warpage
ECS4F-03-534A		PBT, PET, ABS			
ECS4F-03-568H		PA			
ECS4F-03-584		PPS, LCP, PEEK			

挤出与注塑工艺的终端应用市场

汽车、卡车 / 消费品及商业设备 / 运动休闲 / 电子电气 / 建筑 / 基础设施

End-Use Markets

Automotive / Consumer Goods and Business Equipment / Sports and Leisure / Electrical and Electronics / Building and Construction / Infrastructure



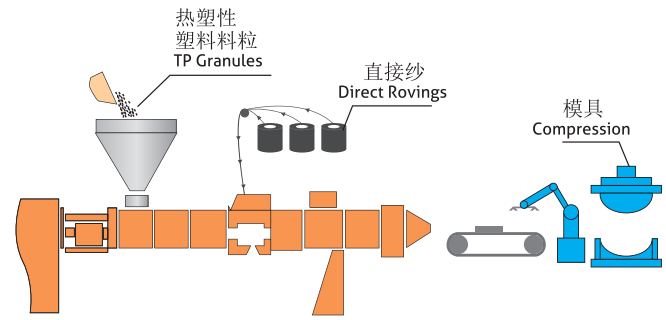
LFT成型工艺

LFT-D

将聚合物和粗纱经过双螺杆挤出机混合挤出，将挤出的混合料直接注塑成型或模压成型。

LFT-G

玻璃纤维在牵引设备的拉引作用下通过熔融聚合物浸渍，经冷却后切割成粒料。



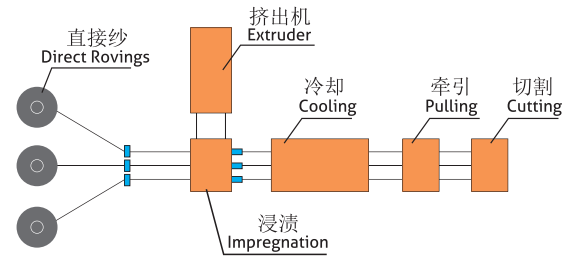
LFT Process

LFT-D

Polymer pellets and glass roving are all introduced into a twin-screw extruder where the polymer is melted and compound is formed. Then the molten compound is directly molded into the final parts by injection or compression molding process.

LFT-G

The thermoplastic polymer is heated to a molten phase and pumped into the die-head. The continuous roving is pulled through a dispersion die to ensure the glass fiber and polymer impregnated fully and to get consolidated rods. After cooling, the rod is chopped into reinforced pellets.



LFT用无碱玻璃纤维直接无捻粗纱

LFT用无碱玻璃纤维直接无捻粗纱采用硅烷基偶联剂、专用浸润剂配方，与PP, PA, TPU、PET等基体树脂具有良好的相容性。

Direct Rovings for LFT

Direct Rovings for LFT are coated with a silane-based sizing and compatible with PP, PA, TPU and PET resins.

产品牌号 Product Code	牌号详情 Details	纤维直径 Filament Diameter(μm)	适用树脂 Resin Compatibility	产品特点 Product Features
352C		17	PA, PET, PBT, TPU	使用工艺性好，通用性好，制品性能优越 Good process performance and universality, excellent mechanical properties
362H		17	PP	适合高预张力体系，力学性能高 High mechanical properties, suitable for high pretension system
362T		17	PP, PE	耐磨性好，耐热氧化性能优异 Good wear resistance, excellent heat and oxygen aging resistance
366		19	PP, PE	适合LFT包覆，集束性好 For LFT coating processes, good integrity

LFT成型工艺的终端应用市场

汽车 / 家电 / 建材

End-Use Markets

Automotive / Household appliances / Building

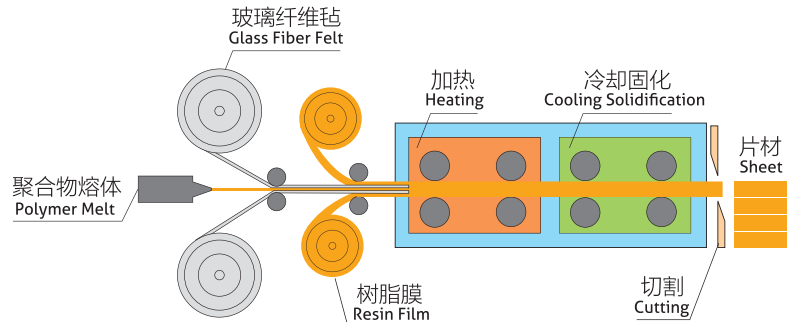


GMT成型工艺

通常将两层玻璃纤维毡夹在三层热塑性聚合物融体或薄膜之间，在履带机上热轧，经冷却硬化形成半成品片材，半成品经预热后，放入模具中进行模压成型。

GMT Process

Generally two layers of reinforcing mat are sandwiched between three layers of polypropylene, which is then heated and consolidated into a semi-finished sheet product. The semi-finished sheets are then heated and molded by stamping or compression process to make complex finished parts.



GMT用无碱玻璃纤维无捻粗纱

GMT用无碱玻璃纤维无捻粗纱采用专用的浸润剂配方，与改性PP树脂有良好的相容性，纤维硬挺度适中，具有优良的成带性和分散性，可赋予复合材料优异的机械性能和电气性能。

Alkali free fiberglass roving for GMT

GMT non alkali glass fiber roving is made of special sizing agent, which has good compatibility with modified PP resin, moderate fiber stiffness, excellent band forming and dispersion, and can give the composite excellent mechanical and electrical properties.

产品牌号 Product Code	牌号详情 Details	纤维直径 Filament Diameter (μm)	适用树脂 Resin Compatibility	产品特点 Product Features
360H		17	PP	GMT用直接纱，分散性好 Direct roving for GMT, good dispersion
522		13	PP	GMT-RD 用合股纱，短切性能好 Assembled roving for GMT-RD, excellent choppability

GMT成型工艺的终端应用市场

建材 / 汽车 / 卡车

End-Use Markets

Building materials / Automobiles / Trucks

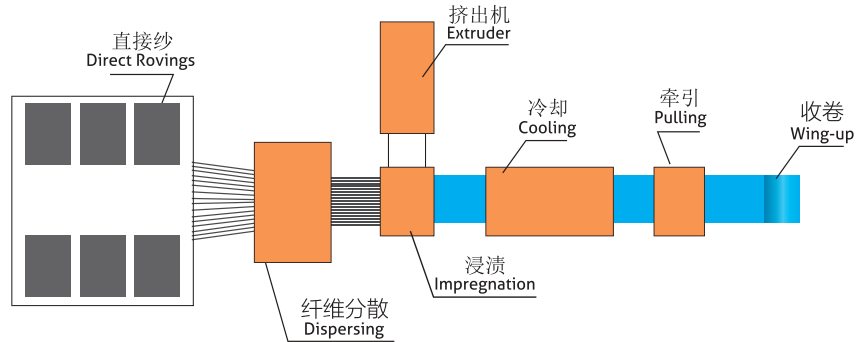


CFRT成型工艺

连续玻璃纤维经分散后通过熔融聚合物浸渍，经冷却硬化并卷绕成卷材。

CFRT Process

A molten mixture of polymer resin and additives is obtained through an extruder. The continuous filament roving is dispersed and impregnated by pulling through the molten mixture. After cooling, curing and coiling, the final material is formed.



CFRT用无碱玻璃纤维无捻直接纱

CFRT用无碱玻璃纤维无捻直接纱与改性PP和PE树脂有良好的相容性，可赋予复合材料优异的机械性能。

Direct Rovings for CFRT

Direct Rovings for CFRT are compatible with modified PP and PE resins and have excellent mechanical properties.

产品牌号 Product Code	牌号详情 Details	纤维直径 Filament Diameter(μm)	适用树脂 Resin Compatibility	产品特点 Product Features
362A		17	PP, PE	分散性好，力学性能优异 Good dispersion and excellent mechanical properties
364A		17	PP, PE	集束性适中，较好的耐磨性 Moderate integrity, good wear resistance

CFRT成型工艺的终端应用市场

汽车 / 建筑

End-Use Markets

Automotive / Building and Construction



开模成型用玻璃纤维产品 Fiberglass Products for Open Molding	喷射成型工艺 Spray-up Process
	手糊成型工艺 Hand Lay-up Process
管道成型用玻璃纤维产品 Fiberglass Products for Pipes	缠绕成型工艺 Filament Winding Process
	离心浇铸成型工艺 Centrifugal Casting Process
模压成型用玻璃纤维产品 Fiberglass Products for Compression Molding	SMC成型工艺 SMC Process
	BMC成型工艺 BMC Process
	LFI工艺 LFI Process
连续型材用玻璃纤维产品 Fiberglass Products for Continuous Profiles	拉挤成型工艺 Pultrusion Process
	连续板材成型工艺 Continuous Panel Molding Process
热塑性塑料用玻璃纤维产品 Fiberglass Products for Thermoplastics	挤出与注塑工艺 Extrusion and Injection Processes
	LFT成型工艺 LFT Process
	GMT成型工艺 GMT Process
	CFRT成型工艺 CFRT Process
其它玻璃纤维产品 Fiberglass Products for Other Processes	膨化工艺 Texturizing Process
	增强石膏工艺 Reinforcements for Gypsum
	汽车顶棚成型工艺 Automotive Headliner Molding Process
布毡用玻璃纤维产品 Fiberglass Products for Fabrics and Mats	编织工艺 Weaving Process
	制毡工艺 Mat Production Process
玻璃纤维制品 Fiberglass Mats and Woven Rovings	制毡工艺 Mat Production Process
	编织工艺 Weaving Process
高性能复合纤维 High Performance Hybrid Fibers	模压成型 Mold Pressing
	层压板材成型 Laminate Molding
	缠绕成型 Filament Winding
	拉挤成型 Pultrusion
	真空辅助成型 Vacuum-Assisted Molding
连续型玻璃纤维布/纱 Continuous Electronic Glass Fiber Fabric and Yarn	连续型玻璃纤维布 Continuous Electronic Glass Fiber Fabric
	连续型玻璃纤维纱 Continuous Glass Fiber Yarn



地址: 浙江省桐乡市梧桐街道凤凰湖大道318号, 邮编: 314500

Add: 318 Fenghuanghu Avenue, Wutong District, Tongxiang, Zhejiang 314500, China

(国内销售 Domestic Sales)

电话 Tel:+86-573-88181016

传真 Fax:+86-573-88136248

(国际销售 International Sales)

电话 Tel:+86-573-88136318

传真 Fax:+86-573-88181058

(客服 Customer Service)

电话 Tel:+86-573-88136325

传真 Fax:+86-573-88136248

http://www.jushi.com E-mail: info@jushi.com



中国巨石官方订阅号
Follow us on WeChat